

# Our Fees and Funding

April 2026

## Contents

Welcome to Bristol Childcare **2**

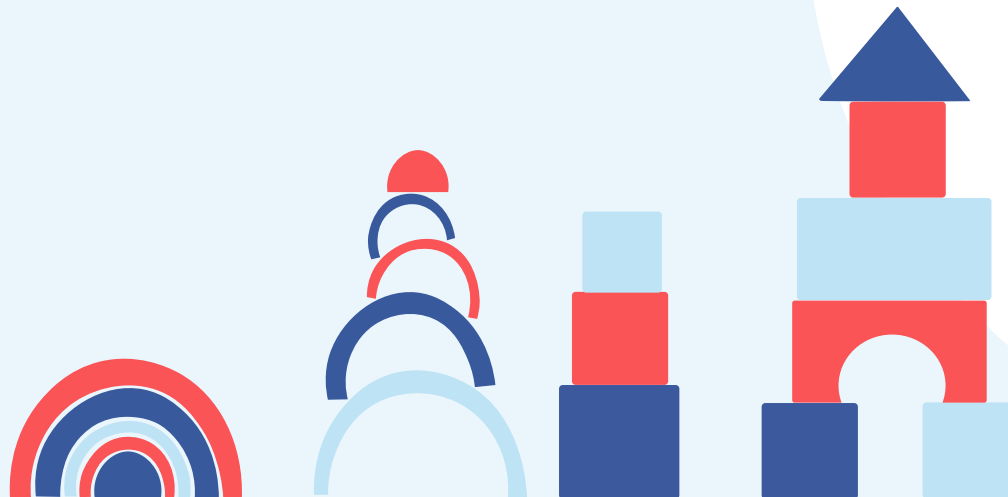
Government Funding **3**

Applying for Funding **5**

Our Fees **6**

FAQs **9**

Helpful Links **||**



# Welcome to Bristol Childcare

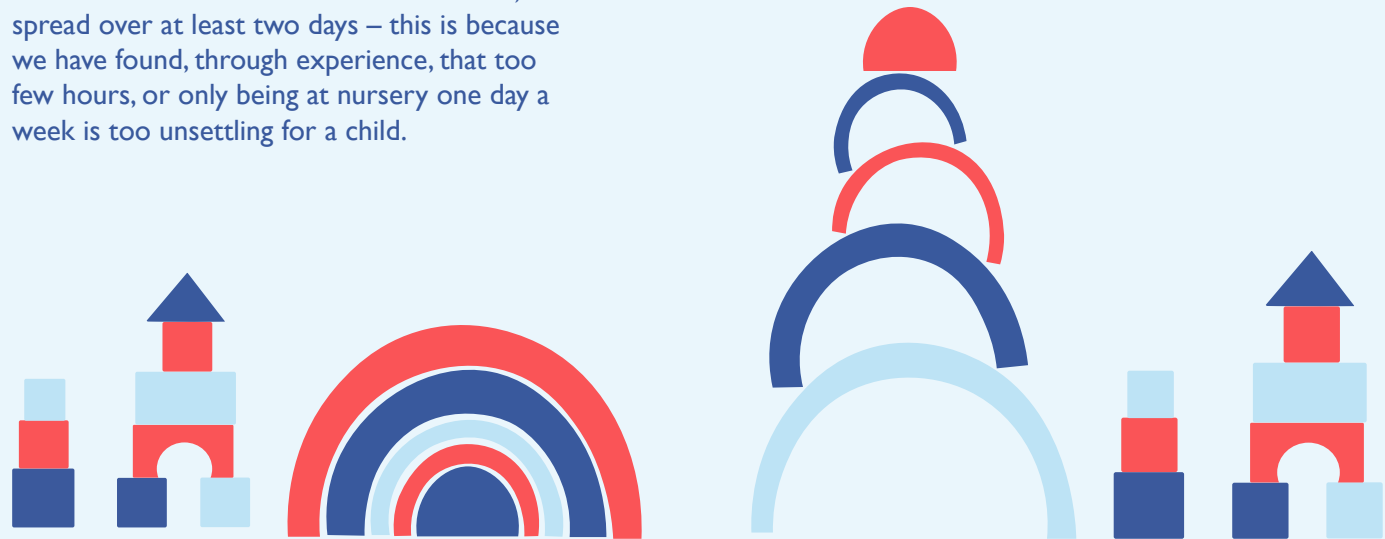
**Bristol Childcare has been a family run business since 1971 when we opened Mornington House. This longevity means that we really understand children and their needs and the breadth of experience across the family means that we can run a sustainable business while keeping a homely, personal feel.**

**Our vision is to provide small, homely and flexible childcare to a high standard. We do this by ensuring our ethos permeates all aspects of what we do.**

**Small** – our nurseries are in former homes so they are divided into rooms with attractive features such as bay windows. Where we have bigger groups, such as the pre-schools, we work in small groups so that we can nurture each child. Each room is set out to create welcoming spaces that encourage communication and language development.

**Homely** – we want to make you and your child feel at home. As a family run business we keep the needs of the children and their families at the heart of what we do. We create cosy rooms with natural, appealing toys and provide home-grown and home-cooked food. We are also proud of our warm and friendly team and work hard to nurture them, resulting in a low turnover of staff. Some of our staff have worked for Bristol Childcare for more than 35 years.

**Flexible** – with us you don't have to do fixed sessions, you can book your hours to suit you and your child. All we ask is that your child is with us for at least 8 hours a week, spread over at least two days – this is because we have found, through experience, that too few hours, or only being at nursery one day a week is too unsettling for a child.



# Government funding

**Understanding childcare funding isn't always easy. In England, there are two types of government funding that can help pay for childcare.**

## What We Offer

From September 2025 the Government is providing up to 1140 hours of funded childcare per year for all eligible children who are over 9 months old. This is often referred to as '30 hours free childcare' because it is free at the point of delivery for parents over the academic year of 38 weeks, sometimes called 'Term Time Only'. This type of funding is for working parents and you will have to apply to check you are eligible. If you are not working, or are in receipt of some benefits, you may be eligible for the second type of funding of 570 hours for 'eligible 2 year olds'. Everyone is eligible for 570 hours for their children over 3 years old.

At Bristol Childcare we refer to the offer as 'funded childcare' because the Government pays us for each hour used. This is a rate completely independent of our usual charging structure and varies between local authorities. The hours are 'free' to access for parents and you will not be charged anything for them. We will not ask for voluntary additional payments and will not charge for additional services such as Talking Tots or uSports sessions.

We are registered with local authorities to offer funded hours to under 2s from working families, 2-year-olds from working families, eligible 2-year-olds and 3 and 4-year-olds

**At Bristol Childcare**  
We offer funded hours from 10am to 6pm. Hours outside this are charged at our hourly rates. We offer a sliding scale of charges so the more hours you pay for the less per hour you pay.

## Tax Free Childcare

Don't forget to apply for your Tax Free Childcare Account - this saves you money on every pound you actually spend on hours not already funded.

## Funded childcare for children over 9 months

### Here's what you need to know:

- All children of eligible working parents qualify for funded hours from the start of the term AFTER they are 9 months old.
- At Bristol Childcare, we 'stretch' these hours over the whole year. This means that the total hours (usually 30hrs for 38 weeks = 1140hrs) is spread over the days we are open for the whole year. For most parents this means we can offer 22.8 funded hours per week over 50 weeks.
- We are open 10.5 hours per day, 5 days a week so when your child attends for longer than the funded hours covers you will need to pay. We offer a flexible approach so you book for the hours you need, not half or full day sessions. You must, however, book these and commit to these hours. You can change hours with a calendar month's\* notice.
- You might be eligible for funded childcare at the same time as other government schemes or incentives even if you are not working. If you are in receipt of some types of benefits or your child has additional needs, please find out more at [www.gov.uk/browse/benefits](http://www.gov.uk/browse/benefits).

\*A calendar month shall commence on the 1<sup>st</sup> of the month.

# Government funding cont.

## When is my child eligible?

The tables below show when children will become eligible to access funded hours.

<b>Child becomes 9 months old</b>	Jan	Feb	Mar	Apr	May	Jun	Jul	Aug	Sep	Oct	Nov	Dec
<b>2nd Birthday</b>	Jan	Feb	Mar	Apr	May	Jun	Jul	Aug	Sep	Oct	Nov	Dec
<b>3rd Birthday</b>	Jan	Feb	Mar	Apr	May	Jun	Jul	Aug	Sep	Oct	Nov	Dec
<b>Eligible from...</b>	Apr	Apr	Apr	Sep	Sep	Sep	Sep	Sep	Jan	Jan	Jan	Jan

September 2025		9 months - 2 years	2-3 years	3-4 years	Total Hours
<b>Entitlement over 38 weeks - Term Time Only ('The Government Offer')</b>	All Parents	-	-	15 hours	570
	Working Families	30 hours	30 hours	30 hours	1140
	Families with special circumstances	-	15 hours	-	570

September 2025		9 months - 2 years	2-3 years	3-4 years	Total Hours
<b>Entitlement over the whole year at Bristol Childcare - All Year Round</b>	All Parents	-	-	11.4 hours	570
	Working Families	22.8 hours	22.8 hours	22.8 hours	1140
	Families with special circumstances	-	11.4 hours	-	570

## Where to get help

**Talk to us:** speak to your nursery manager — they'll explain how the funding will work for you.

## Check the government website:

if you're struggling to make sense of eligibility, or want to find out about government schemes and incentives, visit [gov.uk](http://gov.uk) and follow the relevant links.

## Eligibility

Parents will need to meet eligibility criteria in order to access funded childcare.

Parents can check whether they are eligible for a range of government childcare offers via Childcare Choices at: [www.beststartinlife.gov.uk](http://www.beststartinlife.gov.uk) or the Childcare Calculator at: [www.gov.uk/childcare-calculator](http://www.gov.uk/childcare-calculator)

To access funded childcare you will need to have a government ID and this will allow you to get an access code which you will need to provide to us.

To register and get your code please visit [www.gov.uk/get-free-childcare-if-youre-working](http://www.gov.uk/get-free-childcare-if-youre-working)

## Good to know:

**You will need to renew your eligibility code status frequently and we draw your attention to the Government guidance which states:**

Parents will be prompted every three months to reconfirm the details they entered on their application are still accurate. This is to check that they are still eligible. They will be prompted, via text message and/or email, four weeks before their reconfirmation deadline and again two weeks before the deadline if they still haven't reconfirmed. If their circumstances have changed, they will log into their childcare service account, amend their details and then resubmit their details. If their circumstances have not changed, they only need to reconfirm their details.

If parents miss the reconfirmation deadline, they will receive a message telling them that their eligibility has lapsed. Although they are no longer eligible, they may be able to retain their childcare place for a short period; this is known as a grace period. Parents are directed to speak to their childcare provider about this.

# Applying for funding

**How and when you need to apply for your childcare funding depends on your child's age, the scheme and some other factors.**

## When to apply

You might be wondering when your child will be able to use funded hours. It's all down to when their birthday falls, so make sure you plan ahead. Using the table on the previous page, you can see when your child will be eligible.

If you're a parent of an eligible 2 year old, the earliest you can apply for funding directly through your local authority is at the beginning of the term in which your child turns two.

## Reminder

You should be applying for your eligibility code for funding 3 months before you wish to access it.

## Funding Loop App

At Bristol Childcare we use a system called Funding Loop. This allows us to collect the data we need from you to ensure we can offer the funded hours to your child. You will need to set up a free account so you can send us this information and ensure we are compliant with the Government rules.

## Term time changes

The funded hours are organised on a termly basis. If you are thinking of joining or leaving us mid-way through a term, please get in touch so we can discuss how funding will apply to you.

## Don't forget!

Every three months, sign into your HMRC childcare account to reconfirm your working family funding eligibility code. If you forget, you might lose your funding for the following term, which means you'll have to pay our standard fee for any time that isn't covered by the funded hours.

## Good to know:

- If you're separated from your partner, you'll need to decide between you who should apply, unless only you have parental responsibility.
- For working family funded childcare, HMRC will usually send you reminders about when to reconfirm, but it's a good idea to set up a reminder yourself. That way, you won't miss out on this extra bit of help towards the cost of childcare.

# Our fees

**While the government funding is a great help towards childcare fees, it only covers a limited number of hours and doesn't pay for everything.**

## Funded hours

Hours are allocated from the start of the week, starting at 10am each day.



## Payable hours

Additional hours that cover the rest of your child's time in nursery.



## Meals, snacks + extras

All the costs that aren't funded by the government's contribution.



## Rate for non-funded hours

The charge for those additional hours.



## ParentZone App

We use a system called ParentZone to communicate with you about all aspects of your child's progress and care. ParentZone is also used to send you your bill for non-funded hours, meals and extras. You can see your account history, make payments and download useful information.

We've already explained your funded hours. For meals, snacks and extras and any non-funded hours, you will need to pay for these. Here we explain these fees.

## Fees

Unlike many nurseries which charge by session, we charge by the hour for all attendance which is not covered by funded hours. There is a sliding scale of hourly rate depending on how many hours are paid for which we call Tiers.

We offer funded hours between 10am and 6pm each day. Attendance outside these hours is chargeable even if you haven't used all of your funded hours.

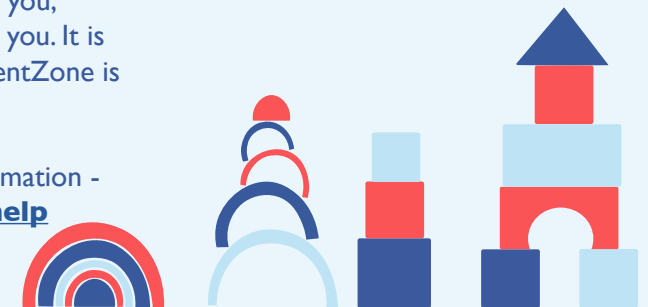
You will not receive a bill for the funded hours but you will have to create a Funding Loop login and sign a declaration form telling us how you want to receive your hours, and if you are planning to split them with another nursery / pre-school or childminder.

You have to keep the same funded hours for a whole term. As the hours are free at the point of delivery we are not allowed to show any cost related to these hours. To calculate your bill we deduct the funded hours and apply the tier prices to chargeable hours only and not to the whole attendance.

## How your bill is delivered

We charge for childcare one month in advance. You will receive a bill on the last Friday of each month for the following month's fees as well as any extras (hours, meals etc.) for the previous month. Your bill will be available to view on ParentZone and you will receive an email to remind you, however, your bill will not be emailed or printed for you. It is therefore important that your registration with ParentZone is up to date.

Please use the Guide on our website for more information - [www.bristolchildcare.co.uk/parentzone-help](http://www.bristolchildcare.co.uk/parentzone-help)



# Our Fee Schedule

The rates below are valid from 1<sup>st</sup> April 2026

3 Year Olds		
Hours purchased* per week	Tier	Price Per hour
26 or more	1	£8.86
More than 18 hours but less than 26 hours	2	£10.29
18 hours or less	3	£11.00

2 Year Olds		
Hours purchased* per week	Tier	Price Per hour
26 or more	1	£9.45
More than 18 hours but less than 26 hours	2	£10.57
18 hours or less	3	£11.10

Babies (Under 2 Year Olds)		
Hours purchased* per week	Tier	Price Per hour
26 or more	1	£9.81
More than 18 hours but less than 26 hours	2	£10.96
18 hours or less	3	£11.52

\* Paid for by the parent or carer

## What is included and not included in the funded hours

Extras such as nappies, late pick up, early drop off and food remain payable. Any additional hours outside the 'funded hours' are also payable according to our fee structure. Note that the fee structure applies to payable hours only.

## Terms and Conditions

Any hours and services outside those eligible for funding will be charged in accordance with our current Fee Schedule and governed by the Terms and Conditions. You will be required to sign our Terms and Conditions which sets out how we charge, notice periods and what to do if you are not happy with our service.

## Meal Package

Package	What's included*	Price Under 2s	Price Over 2s
1	One snack	£1.26	£1.26
2	One snack and lunch	£5.57	£6.20
3	Two snacks and lunch	£6.83	£7.46
4	Three snacks, lunch	£8.09	£8.72

\* a snack can be breakfast, morning snack or afternoon snack

Breakfast (optional) is available between 7.30am and 8am

Morning snack is at 10am

Lunch is between 11.30am and 12.15pm

## Extras

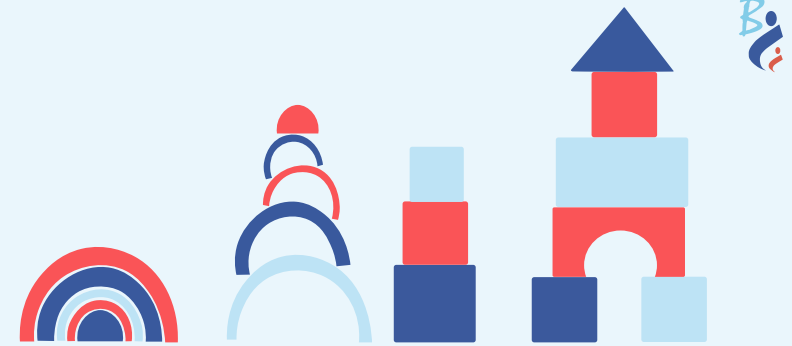
Item	Charge
Late pick up / early drop off before 6pm (5 mins free) per 5 mins	£2
Late pick up (after 6pm) per minute	£5
Late payment (after 10 <sup>th</sup> of month)	£50
Supply of nappy (over 1s)	75p
Supply of nappy (under 1s)	Free of Charge
Paper and additional copies of bills & official documents	£1 (min £5)

## More about Funding Loop

We will ask you to register on the platform to provide your information, including eligibility details, proof of your child's identity and date of birth and confirmation of how you wish to use your funded hours. Information provided

via Funding Loop will be used to manage and deliver your funded hours. If for any reason you are unable to register then please speak to your nursery manager – note we may not be able to offer funded hours if you do not register with Funding Loop.

# Examples



**Under 9 months old**  
5 days from 8am-6pm



**Funded hours**  
not eligible



**Non-funded hours**  
10 hours per day,  
total 50 hours per week -  
chargeable at Tier 1 prices



**Meals**  
at package price

**18 month old**  
5 days from 8am-6pm



**Funded hours**  
22.8 hours - no cost to parent  
(8am to 10am funded hours are not available)



**Non-funded hours**  
27.2 hours -  
chargeable at Tier 1 prices



**Meals**  
at package price

**2 year old**  
5 days from 10am-3pm



**Funded hours**  
22.8 hours - no cost to parent



**Non-funded hours**  
2.2 hours -  
chargeable at Tier 3 prices



**Meals**  
at package price

**3 year old**  
5 days from 8am-1pm



**Funded hours**  
15 hours - no cost to parent  
(8am to 10am funded hours are not available)



**Non-funded hours**  
10 hours -  
chargeable at Tier 3 Prices



**Meals**  
at package price

# FAQs



**In this section you will find answers to many of the questions you may have. If you can't find the answer here please don't hesitate to speak to the nursery manager who will be happy to help.**

## **How do you work out my bill?**

Your daily rates are shown for each day booked. Your meals and extras are shown separately. Any additional (extra) hours from the previous month may be shown against the date used or sometimes in the extras section.

We have 3 tier prices depending on the number of hours purchased on top of any funded hours. If you receive funded hours then these hours are subtracted and the appropriate tier rate is applied to the remaining hours. The number of funded hours allocated during the billing period is shown on the bill, with zero cost alongside.

## **Can I pay by card?**

Yes. You can use cards to pay on our website and through the ParentZone app. There is no charge for paying by card.

## **Can I pay by cheque or cash?**

Unfortunately we do not accept cheques or cash.

## **I've heard that the 'Free Hours' are Term Time Only (TTO).**

### **What do I do for non-term time?**

At Bristol Childcare nurseries we only offer funded hours all year round (AYR, sometimes called stretching your hours) over 50 weeks.

## **My child attends 24 hours, 3 days of 8 hours per day from 8am to 4pm. Can I use my 22.8 hours and just pay for 1.2 hours?**

You can only use your hours from 10am to 6pm. Any hours outside this period will be charged. E.g. With the attendance hours of 8am to 4pm you would be able to access funded hours from 10am until 4pm – 6 hours per day, so a maximum of 18 hours. 8am to 10am each day would be payable at the appropriate hourly tier.

## **My child attends 7.30am to 1.30pm every day, this is 30 hours per week. Why is it not all free?**

We are offering the 'stretched' model and so this works out at 22.8 hours per week. We are only offering funded hours from 10am so the period before this would be chargeable. We recommend adjusting your attendance times to maximise the use of your funded hours.

## **I can't register with Funding Loop, can I still access funded hours?**

We use Funding Loop to manage funded hours and to inform Local Authorities how many hours are accessed. In general we will only be able to claim for hours which are processed through Funding Loop and therefore it is important that parents register and provide the required information. Please speak to your nursery manager if you experience problems and we will do our best to solve them for you.

## **Why do you only offer funded hours at set times?**

We receive less than our hourly rate from the Government so we need to reduce some of the variability in staffing to reduce our costs. We have designed our offer to ensure that families can access all their funded hours in the afternoons without paying for lunch.

## **Do I have to pay a voluntary top up?**

Absolutely not – we will never charge extra or ask for voluntary donations for the funded hours.

## **If the whole funded hours claim is not used, is that ok?**

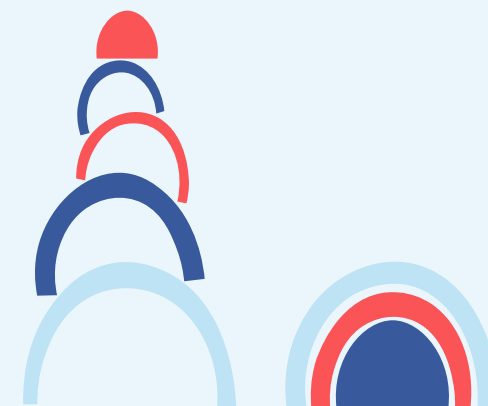
Yes, you can access as few hours as you wish.

## **Can the extra funded hours (not used) be saved up and used at another time?**

No. The funded hours are a 'use it or lose it' resource.

## **Can I request additional funded hours on an ad hoc basis?**

No. The local authority does not allow for increases or decreases until the start of the next term (e.g. January, April, September).



# FAQs cont.

## **How easy is it to get a government gateway ID?**

You can apply online now to have a Gateway ID ready. It does take time and you need to input personal and financial information before access is granted.  
<http://www.gateway.gov.uk/>

## **Do I always need an eligibility code?**

Yes, unless your child is over 3 years old and you only want to claim the 'universal funding' currently 11.4 hours per week at our nurseries

## **What's the minimum wage that is being used for the threshold 'earning the equivalent of 16 hours a week at NMW'?**

The National Minimum Wage is different for different age ranges. Please refer to Government guidance on this.

## **What happens if parents separate?**

Eligibility applies to the parent with whom the child 'normally lives'. Please get in touch with HMRC as a change in living circumstances must be reported.

## **I have twins or triplets, do I need separate codes for each child?**

Yes, you will have unique codes for each child.

## **What happens if the eligibility code is not valid or I don't enter it in Funding Loop correctly?**

Only a valid code will guarantee the funding. It is your responsibility to provide this. If you have lost your code you must contact HMRC. We are not expected to 'hold' a place for a child whose parent is still 'applying' or 're-applying' or has lost their code. We are not funded by the Local Authority for any child who does not have a valid code.

## **Find out more**

We are sure you have lots more questions! Visit our website to find more information regarding our care, meals and education.

**[www.bristolchildcare.co.uk](http://www.bristolchildcare.co.uk)**

# Helpful links

**If you need any extra advice, support or information, we've put together some quick links and contact details below.**

**Government website:** visit [www.beststartinlife.gov.uk](http://www.beststartinlife.gov.uk) for information on the government funded childcare schemes, practical support and early education..

**Bristol Childcare website:** visit [bristolchildcare.co.uk](http://bristolchildcare.co.uk) to find out more about us.

If you are interested in discussing details and options, please contact the nursery to book a visit.

**The Court House**  
0117 977 2210

**Mornington House**  
0117 973 3414

**The Priory**  
0117 969 2503

[Click here to email](#)

